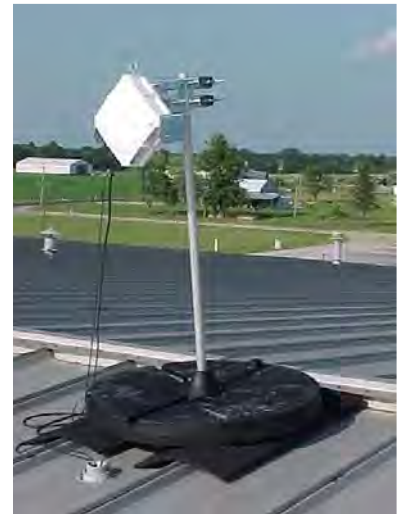


## Hella North America

Hella North America located in Flora, IL needed a high capacity LAN connection between their state of the art manufacturing facilities to support both typical data and VoIP applications. Dark or leased fiber were not an options and though wireless was, they were concerned about interference in the license free bands of 2.4, 5.3 & 5.8GHz due to the presence of three wireless ISPs in the area. The solution **AEI** provided them was a GigE capable wireless connection that operated in the license free band of 60GHz.



### The Wireless WAN Pros!



*FYI – "Hella" was founded in 1899 in Germany. The young company's product range consisted of lanterns for carriages, bicycles and cars. The term "Hella" was used for the first time in 1908 for an acetylene gas headlamp, in which a system of parabolic reflectors and reflecting lenses made greater use of the light than before. The brand name "Hella" was soon transferred to the company's entire product range*